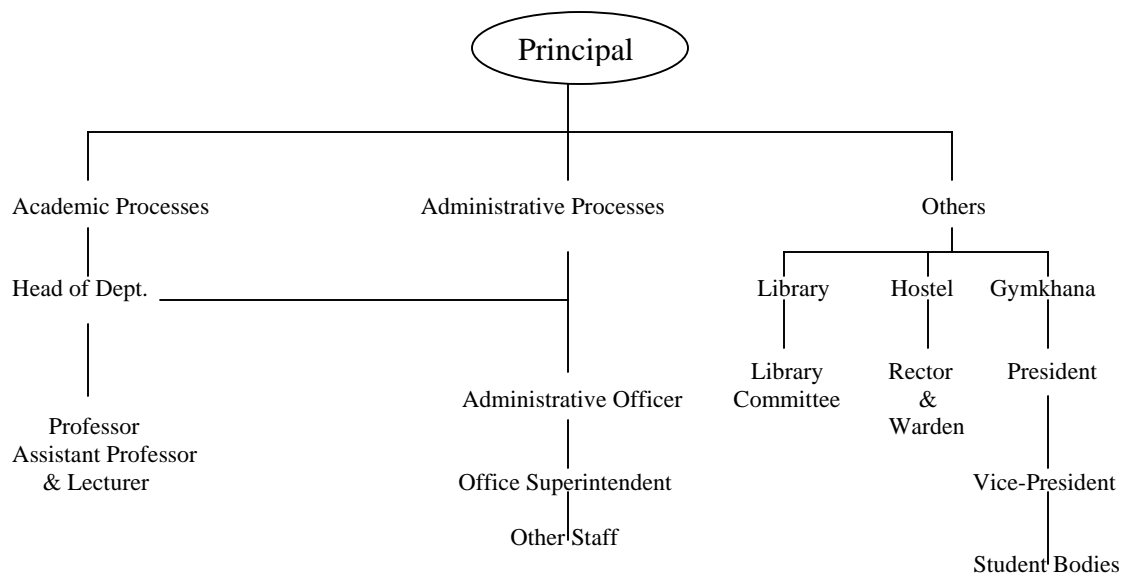


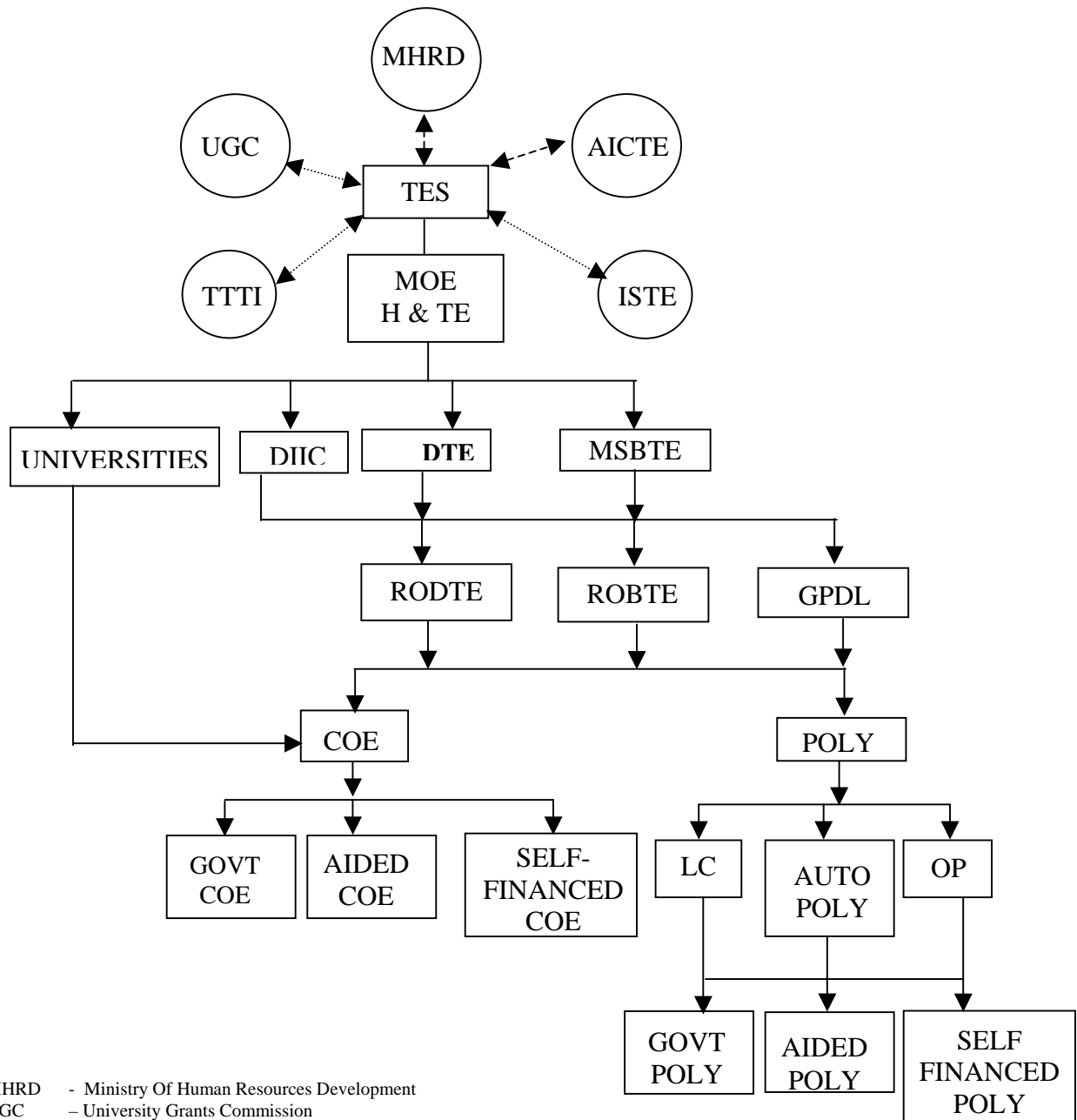
iii) Decision Making Process

All decisions are taken through consensus with the employees and consulting with higher authority.

Channels of Supervision is as indicated in the tree below.



ORGANIZATIONAL CHART AT INSTITUTE LEVEL



- MHRD - Ministry Of Human Resources Development
- UGC - University Grants Commission
- AICTE - All India Council for Technical Education
- TES - Technical Education System
- ISTE - Indian Society for Technical Education.
- TTTI - Technical Teachers Training Institute.
- MOE / H & TE - Ministry of Education / Higher & Technical Education.
- DIIC - Directorate of Industry Institute Coordination.
- DTE - Directorate of Technical Education
- MSBTE - Maharashtra State Board of Technical Education
- RODTE - Regional Office of Directorate of Technical Education
- ROBTE - Regional Office of Board of Technical Education
- GPDL - Govt. Polytechnic for Distance Learning
- COE - College of Engineering
- LC - Lead Center
- OP - Other Polytechnics

Figure 1: ORGANIZATIONAL STRUCTURE OF TES IN MAHARASHTRA STATE

Accountability:

The institute keeps a check on accountability through the following procedures.

1. Annual confidential reports are submitted by the officers, which also includes self appraisal by the employees.
2. Every teacher is assessed by the students through a written feed-back proforma at the end of each semester.